



# The SASS Effect on Academic Success and Retention: An Observable Phenomenon

- The analysis carried out in April 2017 on student retention after two years of study shows that SASS has an undeniable impact on retention and academic success.
- The analysis of the retention rates after two years for 33,000 students from three different cohorts admitted in 2012, 2013 and 2014 demonstrates that those students who use SASS services are more likely to persevere in their studies compared to those who do not. The SASS effect is all the more apparent in the students who use the services that are directly related to academics (academic writing and faculty mentoring) and in those who are admitted with a below 80% average. Indeed, per equal admission averages, retention rates among the students who use SASS are higher. A table outlining the data can be found on the website.

## For example,

- For students admitted with an average of less than 70%, the retention rate for non-users of SASS is 65.5%, while it is at 84.6% among users of the Academic Writing Help Center and 72.3% among users of the mentoring services.
- For students admitted with an average between 70% and 74%, the retention rate of non-users of SASS is 63.2% while it is at 91.2% among users of the Academic Writing Help Center and 90.2% among users of the mentoring services.
- For students admitted with an average between 75% and 79%, the retention rate of non-users of SASS is 69.5%, while it is at 96,9 % among users of the Academic Writing Help Center and 93.3% among users of the mentoring services.

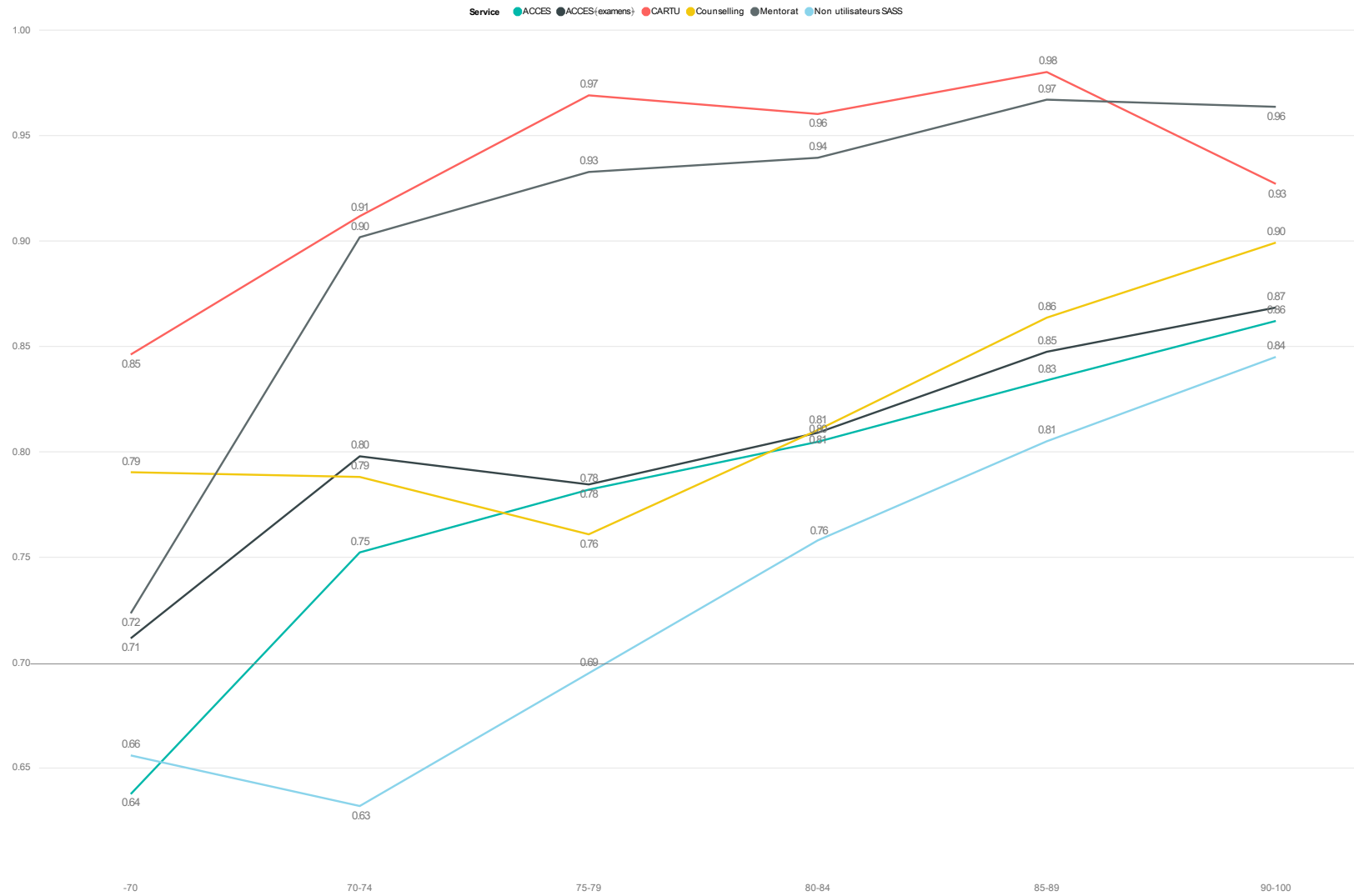
The SASS effect is therefore on the whole positive and significant, all the more so since user and non-user student profiles are similar and because the effect can be seen across all admission average categories.

You will find the data illustrating the SASS effect in the following pages.

Retention rate after two years:

A comparative analysis

Retention rate after 2 years



# Retention rate for non-users of SASS services

Cohort	(Multiple Items)			
		RET2		
sassusers	admavg2	OUI	NON	Grand Total
<input type="checkbox"/> NO	-70	65.6%	34.4%	100.0%
	70-74	63.2%	36.8%	100.0%
	75-79	69.5%	30.5%	100.0%
	80-84	75.8%	24.2%	100.0%
	85-89	80.5%	19.5%	100.0%
	90-100	84.5%	15.5%	100.0%
<b>NO Total</b>		<b>75.2%</b>	<b>24.8%</b>	<b>100.0%</b>
<b>Grand Total</b>		<b>75.2%</b>	<b>24.8%</b>	<b>100.0%</b>

# Retention rate of users of SASS services

%		RET2			
sassusers	Service	admavg2	OUI	NON	Grand Total
YES	ACCES		64.7%	35.3%	100.0%
		-70	63.8%	36.2%	100.0%
		70-74	75.2%	24.8%	100.0%
		75-79	78.2%	21.8%	100.0%
		80-84	80.5%	19.5%	100.0%
		85-89	83.4%	16.6%	100.0%
		90-100	86.2%	13.8%	100.0%
	<b>ACCES Total</b>		<b>79.8%</b>	<b>20.2%</b>	<b>100.0%</b>
	ACCES(examens)		69.2%	30.8%	100.0%
		-70	71.2%	28.8%	100.0%
		70-74	79.8%	20.2%	100.0%
		75-79	78.5%	21.5%	100.0%
		80-84	80.9%	19.1%	100.0%
		85-89	84.7%	15.3%	100.0%
		90-100	86.8%	13.2%	100.0%
	<b>ACCES(examens) Total</b>		<b>81.3%</b>	<b>18.7%</b>	<b>100.0%</b>
	CARTU		83.3%	16.7%	100.0%
		-70	84.6%	15.4%	100.0%
		70-74	91.2%	8.8%	100.0%
		75-79	96.9%	3.1%	100.0%
		80-84	96.0%	4.0%	100.0%
		85-89	98.0%	2.0%	100.0%
		90-100	92.7%	7.3%	100.0%
	<b>CARTU Total</b>		<b>95.5%</b>	<b>4.5%</b>	<b>100.0%</b>
	Counselling		46.2%	53.8%	100.0%
		-70	79.0%	21.0%	100.0%
		70-74	78.8%	21.2%	100.0%
		75-79	76.1%	23.9%	100.0%
		80-84	81.0%	19.0%	100.0%
		85-89	86.4%	13.6%	100.0%
		90-100	89.9%	10.1%	100.0%
	<b>Counselling Total</b>		<b>82.8%</b>	<b>17.2%</b>	<b>100.0%</b>
	Mentorat		80.0%	20.0%	100.0%
		-70	72.3%	27.7%	100.0%
		70-74	90.2%	9.8%	100.0%
		75-79	93.3%	6.7%	100.0%
		80-84	93.9%	6.1%	100.0%
		85-89	96.7%	3.3%	100.0%
		90-100	96.4%	3.6%	100.0%
	<b>Mentorat Total</b>		<b>94.0%</b>	<b>6.0%</b>	<b>100.0%</b>
<b>YES Total</b>			<b>85.6%</b>	<b>14.4%</b>	<b>100.0%</b>
<b>Grand Total</b>			<b>85.6%</b>	<b>14.4%</b>	<b>100.0%</b>